



THE AMERICAN BOARD OF
ANESTHESIOLOGY

2019 ABA UPDATE

Society of Academic Anesthesiology Associations

DAVID O. WARNER, M.D.

Secretary, ABA Board of Directors

Mayo Clinic
Rochester, MN

ROBERT R. GAISER, M.D.

Chair, Assessments Committee

University of Kentucky
Lexington, KY

LEADERSHIP

OFFICERS

Deborah J. Culley, M.D., President

Brigham and Women's Hospital

David O. Warner, M.D., Secretary

Mayo Clinic

Andrew J. Patterson, M.D., Ph.D., Vice President

Emory University School of Medicine

Santhanam Suresh, M.D., M.B.A., Treasurer

Lurie Children's Hospital of Chicago

DIRECTORS

Daniel J. Cole, M.D.

David Geffen School of Medicine at UCLA

Alex Macario, M.D., Ph.D.

Stanford University Medical Center

Rupa Dainer, M.D.

Pediatric Specialists of Virginia

Thomas M. McLoughlin, Jr., M.D.

Lehigh Valley Health Network

Robert R. Gaiser, M.D.

University of Kentucky

Margaret Pisacano, BSN, J.D.

UK Healthcare

Brenda G. Fahy, M.D.

University of Florida

James P. Rathmell, M.D.

Brigham and Women's Hospital

Mark Keegan, M.B., B.Ch.

Mayo Clinic

PROGRAM DIRECTOR MEETINGS



NEW ABSENCE FROM TRAINING POLICY

Effective July 1, 2019



WHAT CHANGED?

OLD POLICY

- Up to 12 weeks (60 working days) of time away during CA1-3 years

Absences in excess of policy will require lengthening total training time

NEW POLICY

- Up to 12 weeks (60 working days) of time away during CA1-3 years
- Up to **8 additional weeks of leave** with ABA-approval (40 working days) during the CA1-3 years **without extending training**
- Additional leave must be approved by the program director and chair prior to submission

ABSENCE FROM TRAINING POLICY UPDATES

- We've received more than 50 requests since the policy became effective on July 1 – most have been for family leave, but several have been for residents' medical leave
- We recognize the challenges the policy may pose; however, we believe it is in the best interest of our trainees and the patients they serve
- We welcome your feedback and will continue to monitor the impact of the policy on programs

RESEARCH INITIATIVES

EVALUATION OF PRIMARY CERTIFICATION

Adding the BASIC Exam increased knowledge at the end of residency as measured by written post-graduation exams

Details on how we administer and score the oral exam

EVALUATION OF MOCA®

Participation in MOCA, including MOCA Minute, is associated with fewer license actions taken by state medical licensing boards against physicians

PHYSICIAN WELL-BEING & WORKFORCE ANALYSIS

Noted prevalence of burnout, distress, and depression among anesthesiology residents over past seven years

Perceived institutional support and work-life balance impact well-being

FUTURE OSCE VALIDATION RESEARCH

- OSCE description manuscript
- OSCE first-year results
- Analysis of OSCE and SOE measurement constructs
- Impact of OSCE on training programs



ADDITIONAL CERTIFICATION PATHWAY

TWO AEP PATHWAYS

RESEARCH & FELLOWSHIP PATHWAY

- Internationally-trained and certified
- Practicing in U.S.
- Pre-existing track record of scholarship as represented by the scholarship of discovery, dissemination and application
- Complete four years of continuous experience in one anesthesiology department
- Approved four-year plan of fellowship training, research or faculty experience
- Funding for K or R grants from NIH, FAER, AHA, APSF, IARS, DOD, VA merit

CLINICIAN EDUCATOR PATHWAY

- Internationally trained in an [ABA-approved](#) training program with 4+ years (3+ years of anesthesiology-specific training) of post-graduate education in anesthesiology
- Letter of support from sponsoring program's chair & PD
- Valid [unrestricted medical license](#) for scope of practice
- Board certification in anesthesiology from an [ABA-approved certifying body](#)
- Clinically active with a [faculty appointment for four continuous years](#) in an ACGME-accredited anesthesiology program
- [Academic rank of assistant professor or higher](#) at the time of application
- Approved [four-year mentoring plan](#) for future academic development as a clinician educator

CONTENT OUTLINE UPDATES

- **Initial Certification Examinations Content Outline**
 - In 2021, the content outline will change to reduce duplication in regional anesthesia topics and to clarify descriptors for the In-Training Exam - Anesthesiology and the ADVANCED Exam
- **Objective Structured Clinical Exam Content Outline (APPLIED Exam)**
 - In 2020, the Interpretation of Monitors and Interpretation of Echocardiograms skills will be combined so all candidates will be tested in both areas

ASSESSMENT UPDATE: THREE RESPONSE OPTIONS

- In 2020, we're transitioning some of our MOCA Minute multiple-choice questions from four- to three-response options
 - Diplomates will receive MOCA Minute questions with both three- and four-response options
- Also in 2020, we'll pilot three-option questions with other assessments:
 - Pediatric Anesthesiology Exam, Critical Care Medicine Exam and In-Training Exams for Pediatrics and Critical Care Medicine
- We will consider transitioning other assessments to three-option questions based on the pilot results

FEES CHANGING FOR FIRST TIME SINCE 2012

Assessment	Increase	2020 Fee
ITE-Anesthesiology	\$75	\$175
ITE-Subspecialties	\$75	\$175
BASIC	\$100	\$875
ADVANCED/Part 1	\$100	\$875
APPLIED/Part 2	\$300	\$2,400
Subspecialties	\$200	\$1,800
MOCA	No Change	\$210; \$100 (1 st certificate; each additional one)





2020 IN-TRAINING EXAMINATION DATES

Anesthesiology: Feb. 6-10

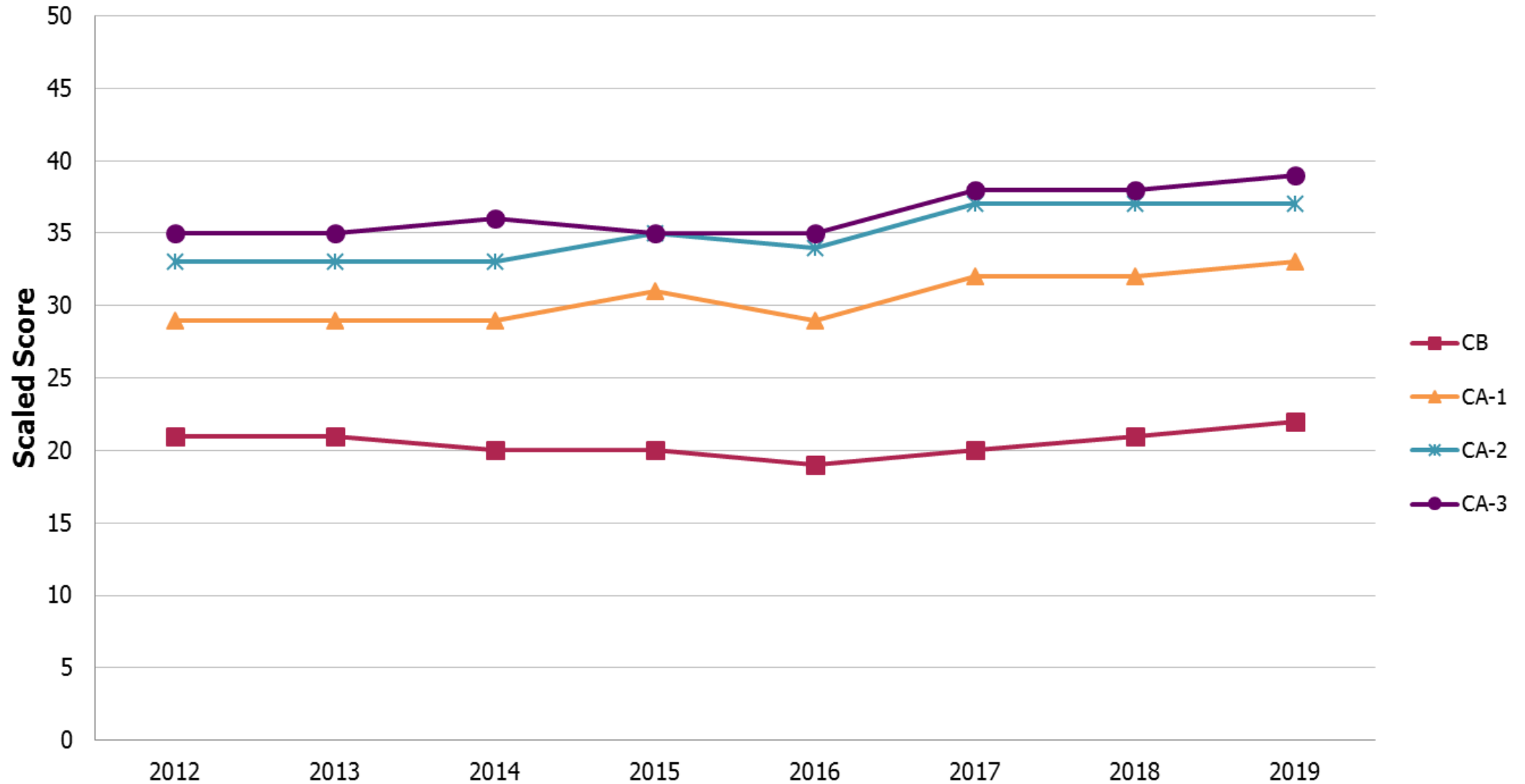
Pain Medicine: March 19-21

Pediatric Anesthesiology: Feb. 20-22

Critical Care Medicine: April 16-18

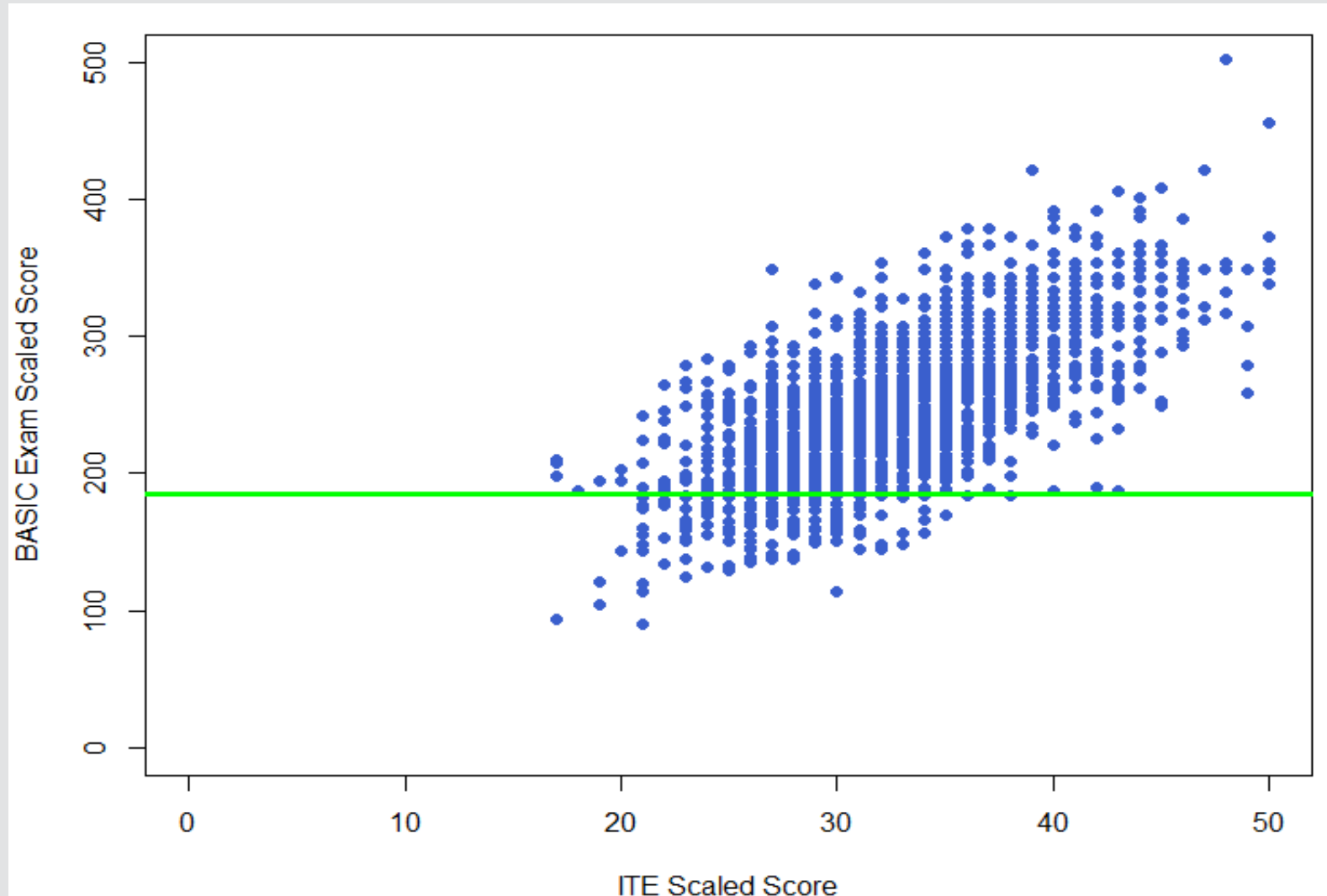
IN-TRAINING EXAM PERFORMANCE

BY TRAINING LEVEL & EXAM YEAR



RELATION OF SCORES

2019 ITE TO 2019 JUNE BASIC EXAMINATION



The correlation between the 2019 ITE scaled scores and 2019 June BASIC Exam scaled Scores is 0.684, $p < 0.001$

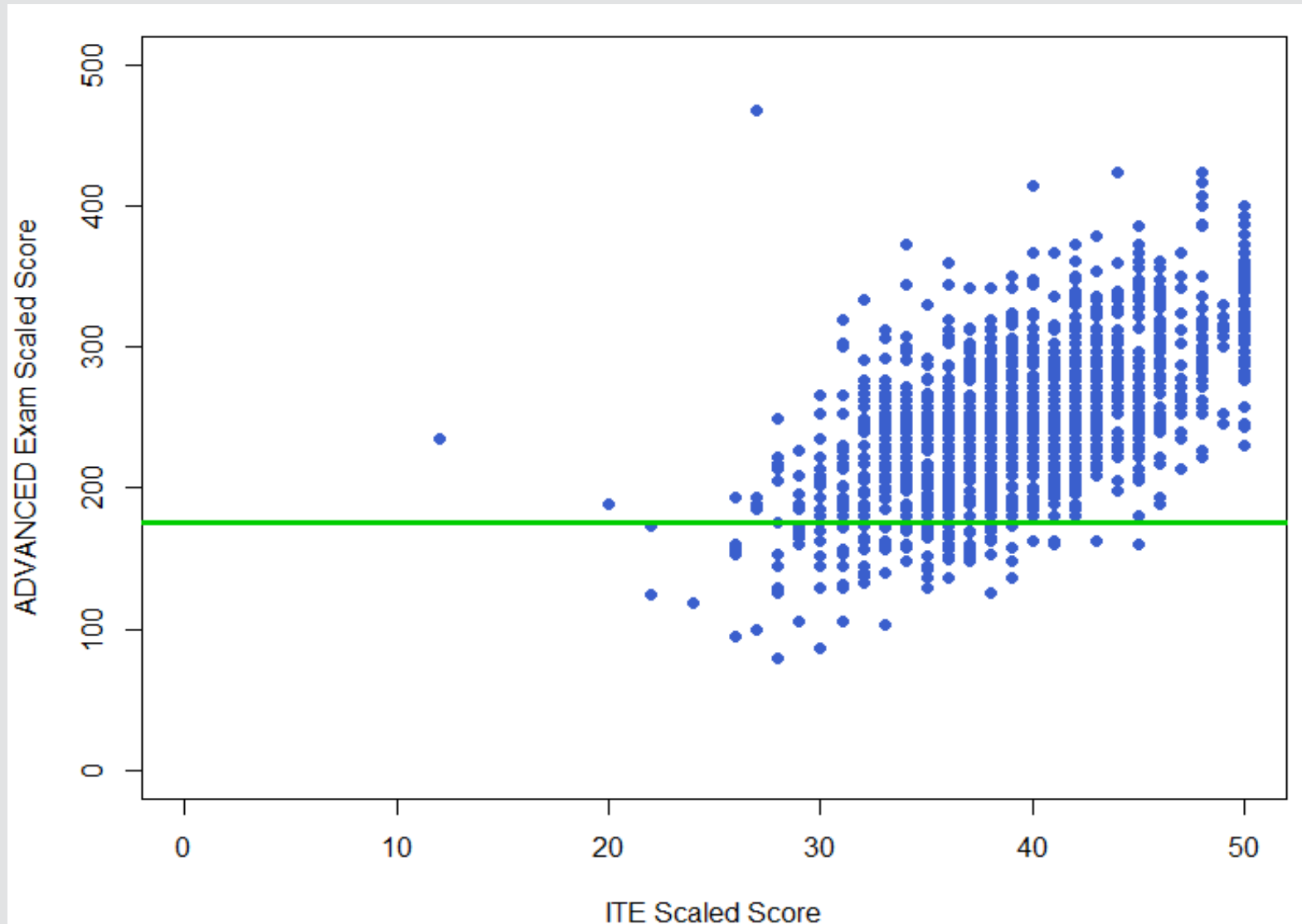
RELATION OF SCORES

2019 ITE TO 2019 JUNE BASIC EXAM

Scaled Score	Percentile Rank in CA1	N	2019 June BASIC Scaled Score Mean (S.D.)	BASIC Pass Rate
≤25	≤7	145	194 (41)	54%
26-30	10-31	475	219 (37)	82%
31-35	38-64	625	247 (38)	95%
36-40	72-89	392	280 (38)	99%
41-45	91-98	145	313 (43)	100%
≥46	≥98	35	343 (46)	100%

RELATION OF SCORES

2019 ITE TO 2019 JULY ADVANCED EXAMINATION



The correlation between the 2019 ITE scaled scores and 2019 July ADVANCED Exam scaled Scores is 0.571, $p < 0.001$.

RELATION OF SCORES

2019 ITE TO 2019 JULY ADVANCED EXAM

Scaled Score	Percentile Rank in CA3	N	2019 July ADVANCED Scaled Score Mean (S.D.)	ADVANCED Pass Rate
≤25	≤1	5	168 (48)	40%
26-30	1-4	58	182 (55)	57%
31-35	6-22	302	219 (42)	87%
36-40	30-58	569	240 (43)	94%
41-45	65-87	431	264 (42)	99%
≥46	≥90	182	304 (46)	100%

2019 JUNE BASIC EXAM RESULTS

- Candidates were assigned to examine on Friday or Saturday
- Key validation eliminated thirteen items from two forms
- 89.7% of residents passed

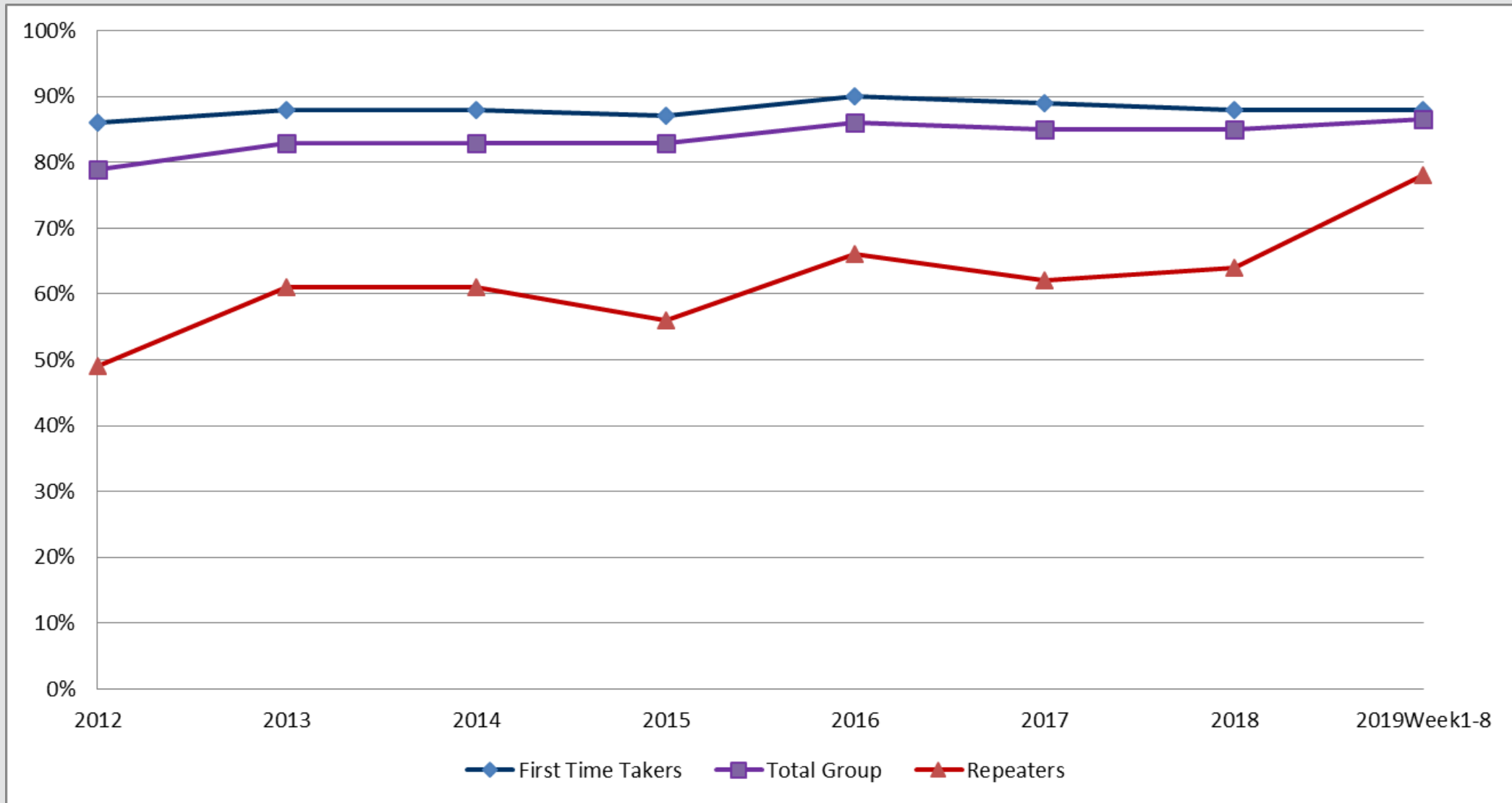
N	Mean Scaled Score	Standard Deviation	Pass Rate	Reliability
1,825	249.4	51.6	89.7%	0.85

2019 JULY ADVANCED EXAM RESULTS

- Candidates were assigned to examine on Friday or Saturday
- Key validation eliminated six items from two forms
- 92.1% of candidates passed

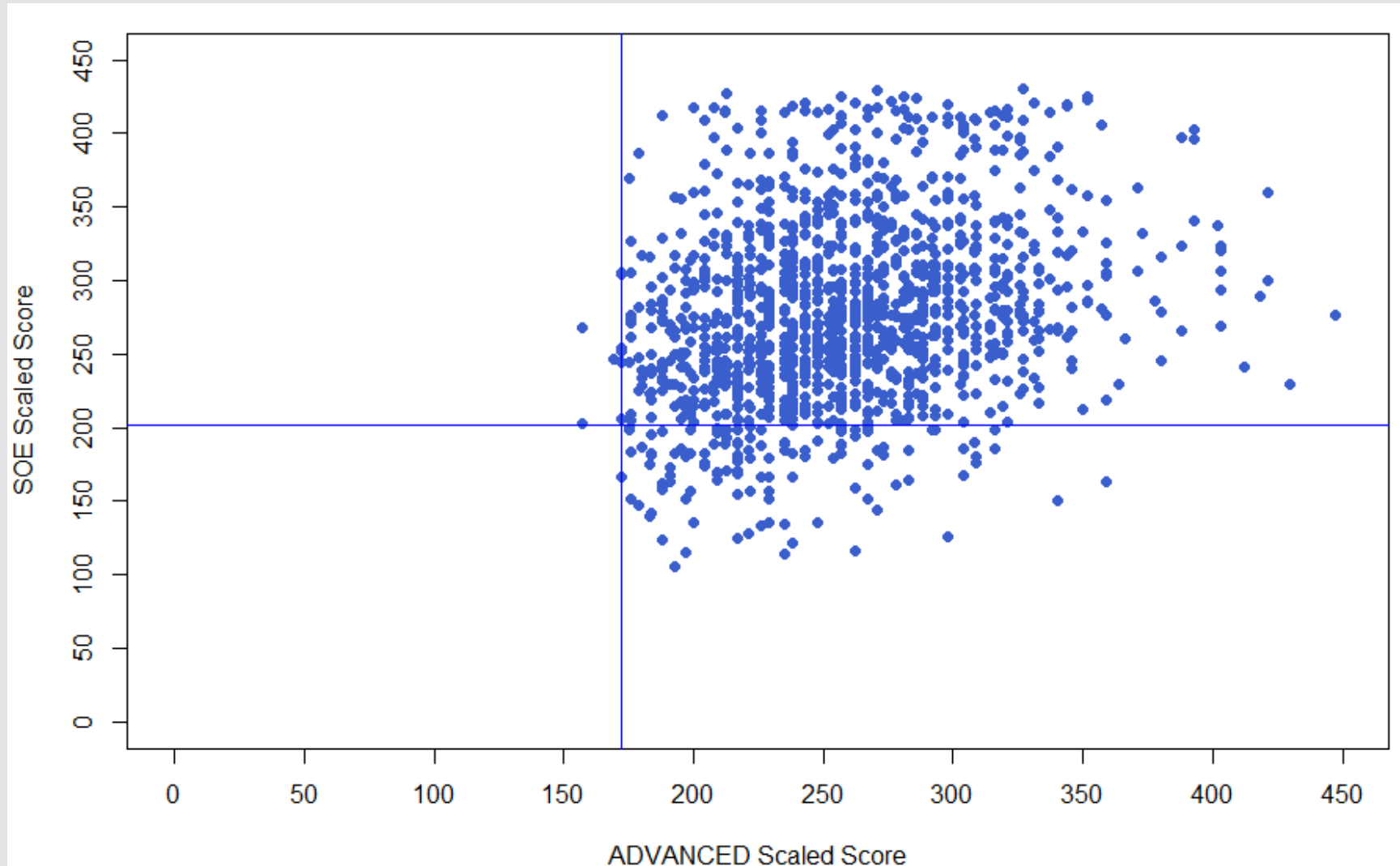
N	Mean Scaled Score	Standard Deviation	Pass Rate	Reliability
1,643	246.9	53.4	92.1%	0.78

SOE/PART 2 EXAM SUCCESS RATES



RELATION OF SCORES

2019 SOE TO FIRST ATTEMPT ON 2018 JULY ADVANCED EXAM



The correlation between the 2019 SOE scaled scores and first attempt on 2018 JULY ADVANCED Exam scaled scores is 0.284, $p < 0.001$

2019 OSCE RESULTS: WEEKS 1-8

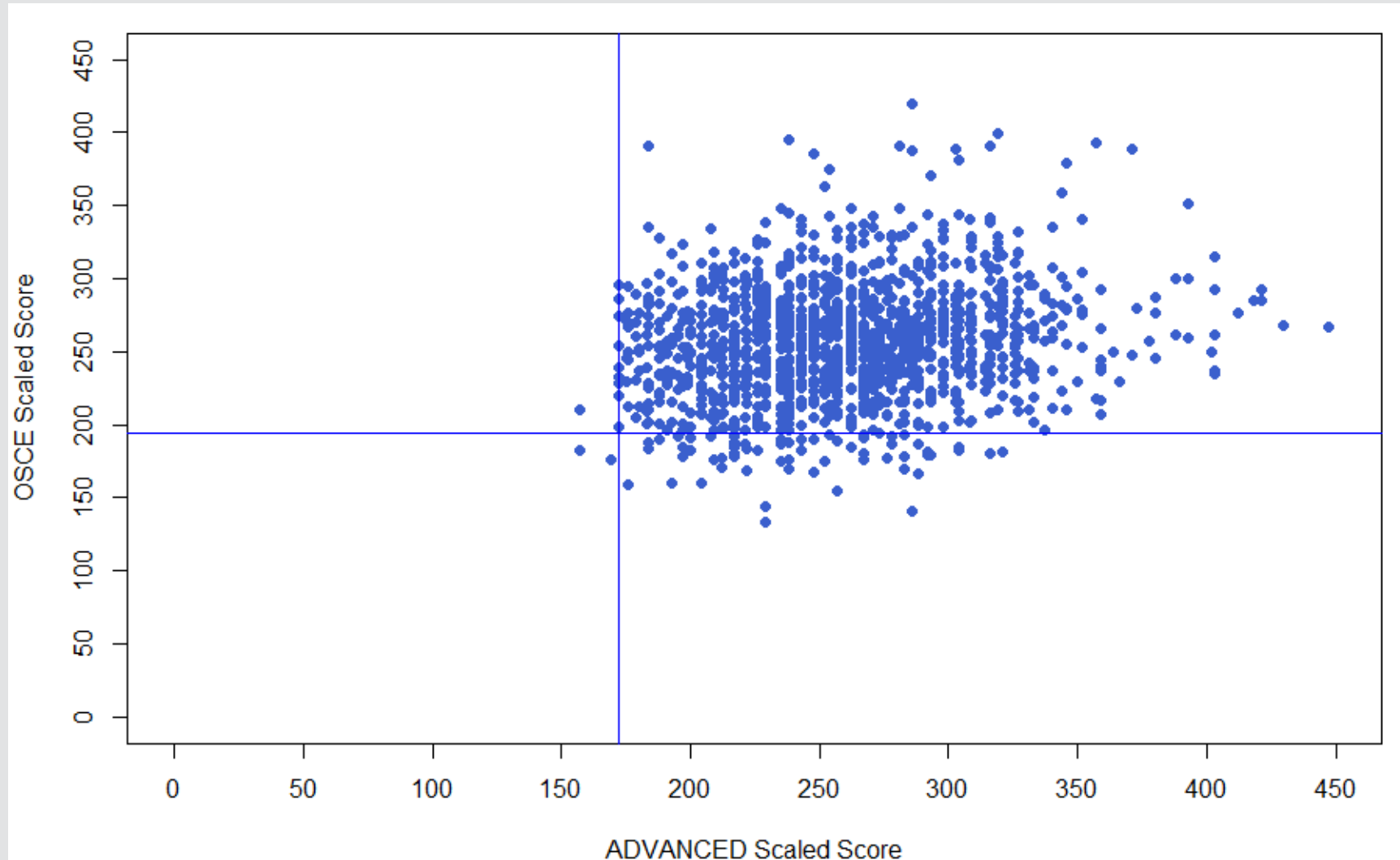
N	Mean Scaled Score	Standard Deviation	Pass Rate
1,582	253.4	38.8	94.6%

1,567 candidates took both SOE and OSCE

	OSCE: Fail	OSCE: Pass	Total
SOE: Fail	34 (2.2%)	142 (9.1%)	176 (11.2%)
SOE: Pass	58 (3.7%)	1,333 (85.1%)	1,391 (88.8%)
Total	92 (5.9%)	1,475 (94.1%)	1,567 (100%)

RELATION OF SCORES

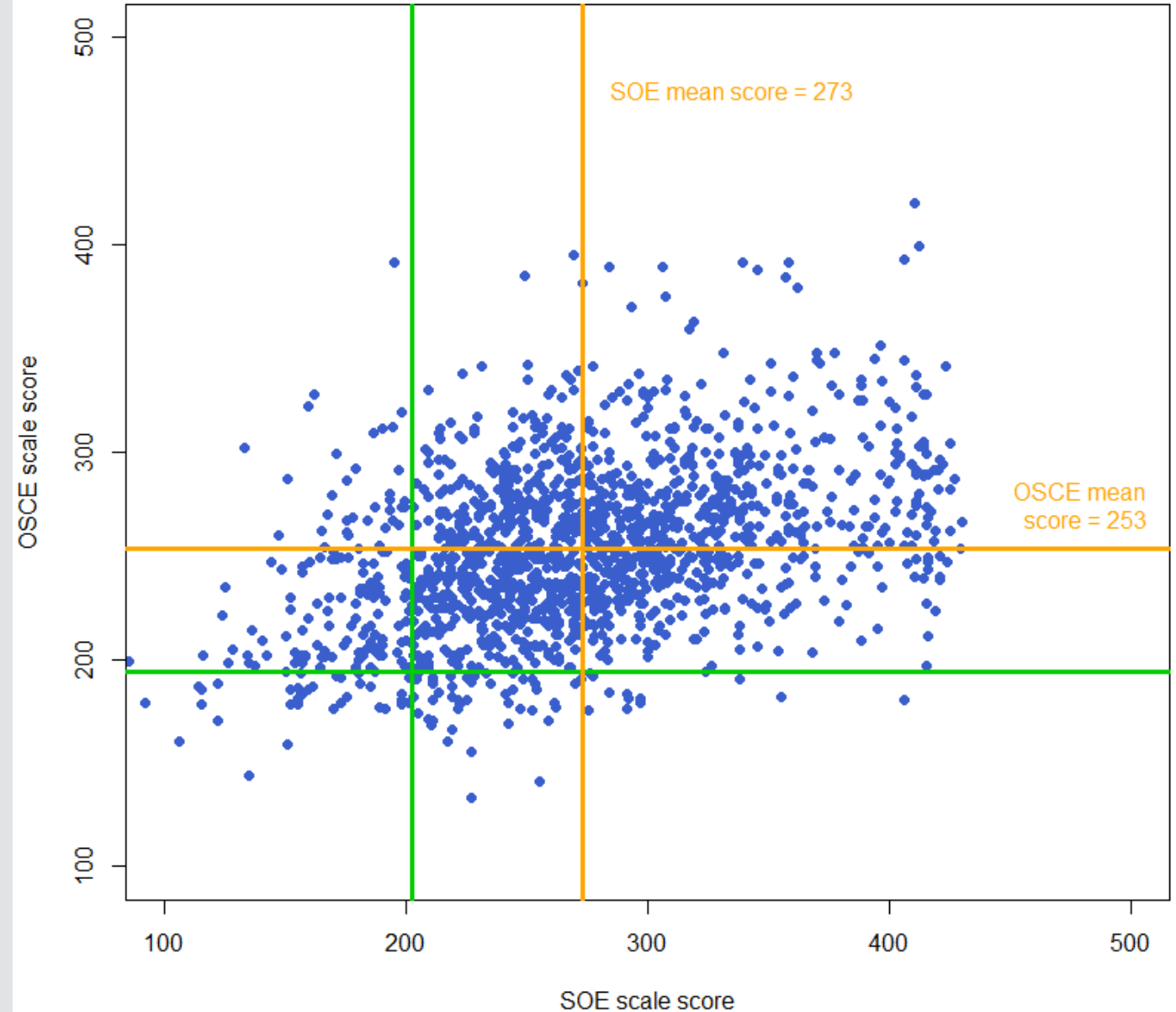
2019 OSCE TO FIRST ATTEMPT ON 2018 JULY ADVANCED EXAM



The correlation between the 2019 OSCE scaled scores and first attempt on 2018 JULY ADVANCED Exam scaled scores is 0.190, $p < 0.001$

RELATIONSHIP BETWEEN OSCE AND SOE SCORES

The correlation between the 2019 OSCE scaled scores and 2019 SOE scaled scores is 0.409, $p < 0.001$





THE AMERICAN BOARD OF
ANESTHESIOLOGY

QUESTIONS?

COMMUNICATIONS CENTER

Phone: (866) 999-7501

Fax: (866) 999-7503

Email: coms@theABA.org

MAIL CORRESPONDENCE

ABA Secretary

4208 Six Forks Rd, Suite 1500

Raleigh, NC 27609-5765

FOLLOW US:

