



ABA Update

SAAAPM 2025 Annual Meeting
AACPD; AAPAE

Rob Isaak, D.O., ABA Director

Jill Eckert, D.O., ABA Director



Our Mission

To advance the highest standards of the practice of anesthesiology



Our Vision

To transform certification to shape the future of anesthesiology



Our Director Values



Serve the Specialty



Listen and Engage



Lead the Way to Elevate Standards

BOARD OF DIRECTORS



MARK KEEGAN, M.B., B.CH.
PRESIDENT



STACIE DEINER, M.D., M.S.
VICE PRESIDENT



JOHN FIADJOE, M.D., MBA
SECRETARY



VIVEK MOITRA, M.D.
TREASURER



HODA BADR, PH.D.



CHRISTIAN DIEZ, M.D., MBA



JILL ECKERT, D.O.



ROBERT ISAAK, D.O., FASA



STEPHANIE JONES, M.D.



TIN-NA KAN, M.D.



JIAPENG HUANG, M.D., PH.D.



MOHAMMED MINHAI, M.D., MBA



ALEX MACARIO, M.D., MBA

Thank You



Strategic Plan Updates



Focusing on Our Strategic Plan

- **Strategy 1:** Reimagine the Future of Assessments
- **Strategy 2:** Develop a Seamless Continuing Certification System
- **Strategy 3:** Evolve Certification Content to Emphasize a Durable (Formerly Holistic) Skill Set
- **Strategy 4:** Take the Lead in Envisioning the Future of the Specialty
- **Strategy 5:** Engage Residents and Programs Early
- **Strategy 6:** Invest in Research to Drive Innovation
- **Strategy 7:** Invest in Volunteer Development



**We encourage you
to view the entire
plan on our website
here:**



Addition to Content Outlines: Leadership, Management and Professionalism

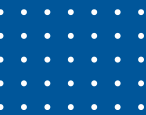
- Conducting Delphi study to support effort: We will be engaging you in this study
- Hosted 10 focus groups with 30 APPLIED examiners
- Generated 572 coded themes related to leadership, professionalism and management
- Decision-making, communication and being a role model were present across each domain

Strategy 3: Evolve Certification Content to Emphasize a Durable (Formerly “Holistic”) Skill Set

Strategy 5: Engage Residents and Programs Early

Introducing Resident Reach

- Resident Reach is a new formative assessment tool that will provide supplemental knowledge and offer insight and feedback on residents' medical knowledge throughout training
- It is meant to spark conversation and learning between residents and attendings, and is not a question bank
- Inspired by MOCA Minute, but distinctly different, offering different question types, questions volume, frequency and times to complete
- Piloted using Survey Monkey in late 2024 and planning a broader pilot including more programs in 2026



Strategy 5: Engage Residents and Programs Early

Resident Advisory Group



Anna Arakelyan, M.D.
UNIVERSITY OF ARIZONA



Alexandra Brady, M.D.
NEW YORK PRESBYTERIAN/
COLUMBIA UNIVERSITY



Alexis Cash, D.O.
PENN STATE HERSEY
MEDICAL CENTER



John Choi, D.O.
MOUNT SINAI
MORNINGSIDE



Lukas Hall, M.D.
UNIVERSITY OF
KANSAS WICHITA



Mercedes Alaina Harvey, D.O.
MCLAREN GREATER
LANSING HOSPITAL



Kian Lari, M.D.
UNIVERSITY OF
NORTH CAROLINA



Abigail Schirmer, M.D.
UNIVERSITY OF FLORIDA



Jasmine Tuteja, M.D.
NORTH SHORE UNIVERSITY
HOSPITAL/LONG ISLAND
JEWISH MEDICAL CENTER



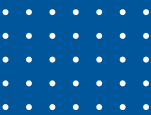
Parisa Ziarati, M.D., MPH
UNIVERSITY OF SOUTHERN
CALIFORNIA/LOS ANGELES
GENERAL MEDICAL CENTER

Strategy 5: Engage Residents and Programs Early

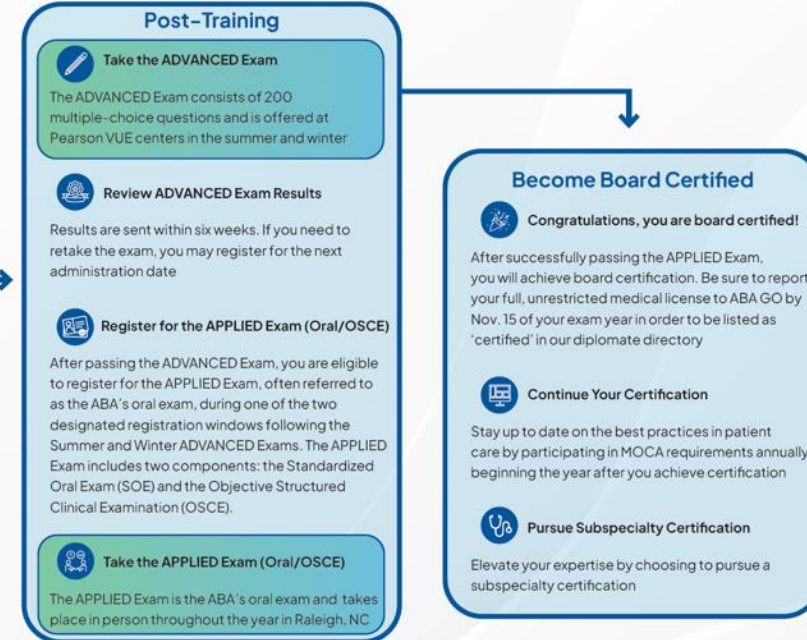
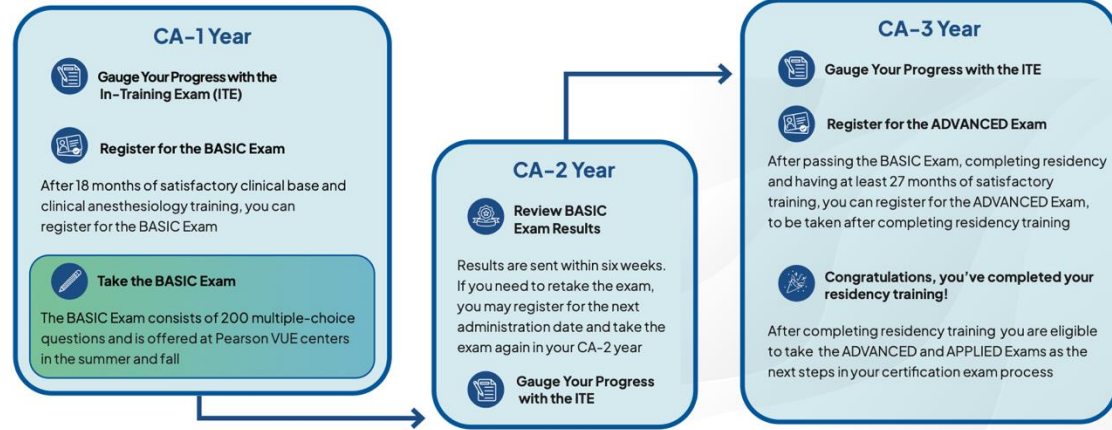
Resident Advisory Group

Initial meetings have provided invaluable feedback, including:

- Residents value board certification because patients trust board-certified anesthesiologists, and it promotes patient safety
- Programs share information about the certification process during CA–1 Year, but the timing and level of detail varies
- Residents are confused regarding the initial certification exam timing, registration, ordering and the name APPLIED Exam because most call it the Oral/OSCE Exam
- We've created a new timeline brochure and will provide Program toolkits in 2026 to help



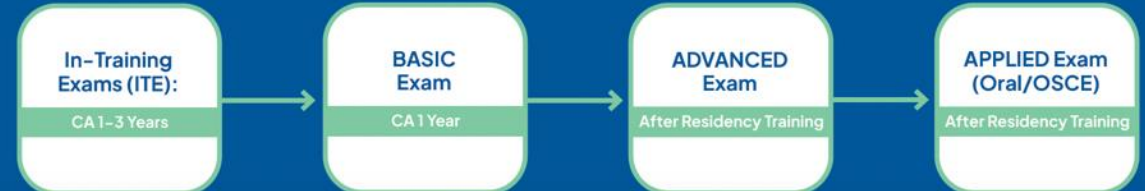
Your Journey with Board Certification



What sets apart board-certified anesthesiologists?



ABA Exam Timeline at a Glance



Strategy 4: Take the Lead in Envisioning the Future of the Specialty

Alternate Entry Pathway Program



Research & Fellowship Pathway Est. 2007

Pre-existing track record of scholarship, discovery, dissemination and application



Clinician Educator Pathway Est. 2019

Demonstrated track record of excellence in teaching and clinical anesthesiology as faculty clinicians



Exceptional Clinician Pathway Est. 2025

Track record of proven clinical care excellence rather than the potential for success



Fellowships Pathway Est. 2023

Pathway to subspecialty certification in Adult Cardiac Anesthesiology, Critical Care Medicine, Pediatric Anesthesiology or Pain Medicine for those certified in anesthesiology via the AEP program

Clinician Educator Pathway Requirements Example



Potential

- Five lectures per year to residents
- POCUS instructor at workshop
- Universally loved by residents

VS



Achievement

- Teacher of the Year
- ASA panelist on medical education
- Program Director
- Simulation Course Director
- Visting Lecturer

2025 Program Director Meetings

- ABA holds biennial Program Director meetings to share updates pertinent to residents and fellows
- During the 2025 meeting, we shared ITE and staged exam results, strategies for OSCE preparation and key policies
- Program Directors who attend in person tour the AIME Center



Program Coordinator Essentials Guide

- Developed new resource to support Program Coordinators documenting residents' and fellows' board certification journey
- Document provides:
 - Key information and timelines for ABA certification exams
 - Instructions for accessing and using the Record of Training Information Database (RTID)
 - Guidance on submitting training records and feedback
 - Details on how to contact the ABA

**Download the
Program
Coordinator
Essentials
Guide here:**



ABA Teams Supporting Program Directors

Credentialing & Continuing Certification

Specialist assigned to each program;
manages case reviews & MOCA

Research

Study efficacy of certification
programs, physician wellness
and other topics of interest

Assessments

Exam development, administration
& registration; on-call during
exams to support candidates at
testing centers; reviews
nonstandard exam cases

Events & Operations

Support APPLIED Exams, 30+
committee meetings/events

Development & Infrastructure

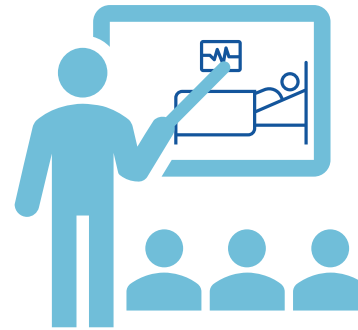
Support technical needs of ABA
GO, RTID and AIME Center

Communications & Marketing

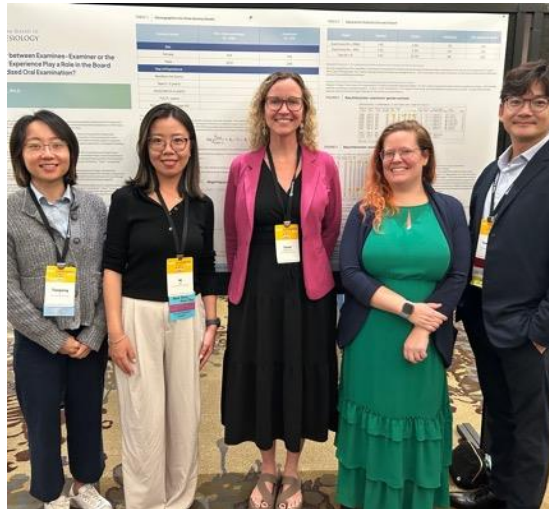
Generate progress reports,
Exam & MOCA information
for anesthesiologists,
newsletters for programs

Physician Engagement

Provide a human touch for physicians
who call/email the ABA

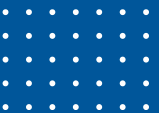


87 Positions Across 11 Teams



Mission Critical: Advancing the Highest Standards

- By the end of 2025, we will have:
 - Administered **12** written exams to **13,747** registered candidates
 - Administered **6** weeks of APPLIED Exams, including OSCE and SOE components to **2,752** registered candidates
 - Added more than **2,200** newly developed written questions to our item banks and...



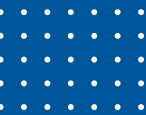
Mission Critical: Advancing the Highest Standards

- ...we couldn't do it without our **700+** volunteers who serve as examiners and/or support our **20** committees that develop questions and exams



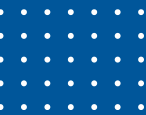
Investing in the Future

- Investing in modernizing infrastructure to enhance ABA GO for seamless user experience (e.g., APPLIED Exam registration)
- Managing APPLIED Exam capacity to ensure all eligible candidates have an exam opportunity
- Experimenting with Artificial Intelligence to enhance efficiencies and close diplomate feedback loops
- Generating programming for network of more than 700 volunteers who develop and deliver ABA assessments
- Investing in research and people needed to advance innovation



Sunsetting ABA PrePay

- We have sunset the ABA PrePay program effective October 2025
- This decision comes in response to declining interest in participation over the past two years
- As a result of this change, the ABA will no longer offer a bulk MOCA or exam payment option for institutions
- Sunsetting this program allows us to put efforts into the Strategic Plan initiatives that are likely to benefit broader segments of the candidate and diplomate community



In-Training Examination (ITE) Key Dates

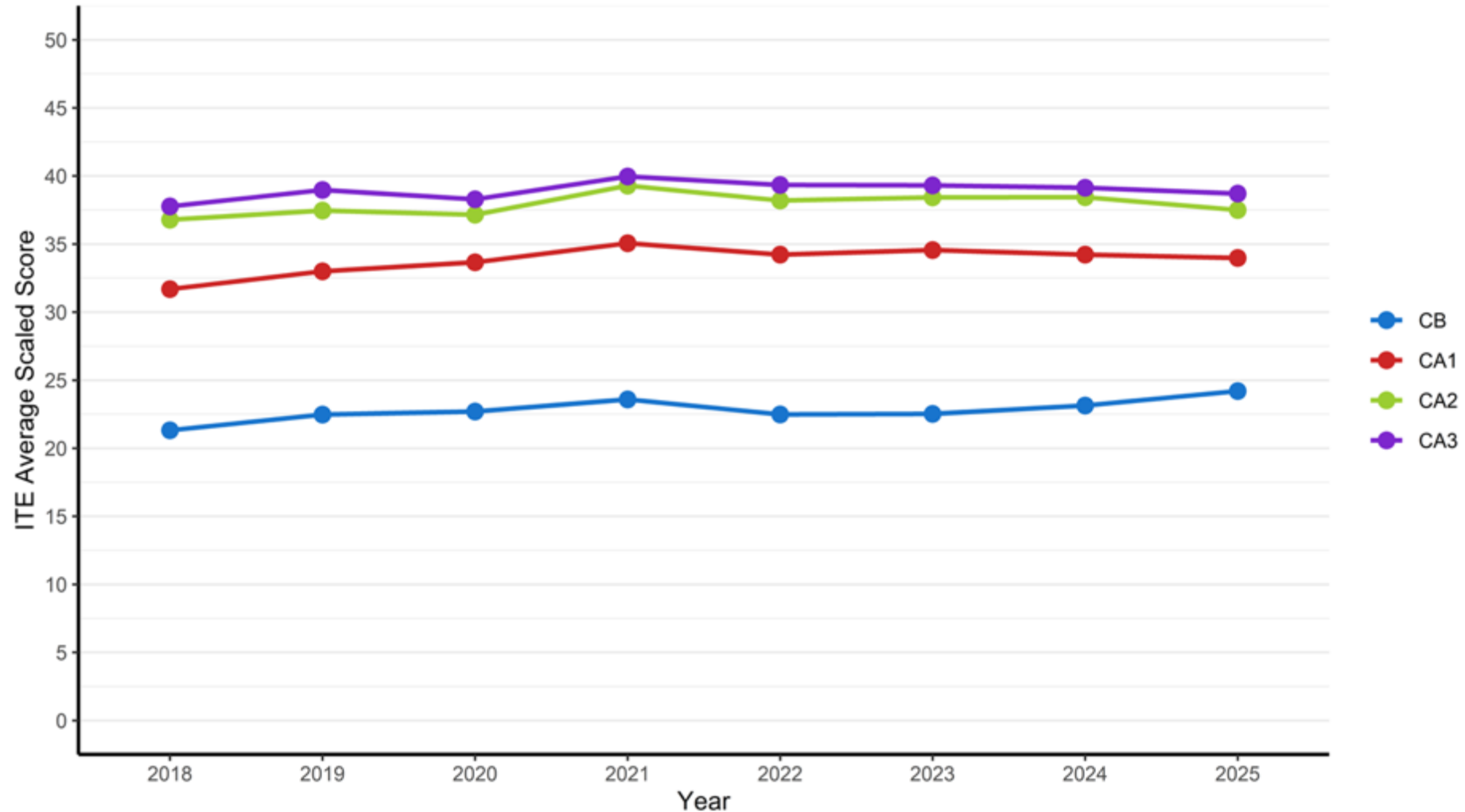
In-Training Exam - Anesthesiology			
Exam Year	Exam Dates	Registration Window	Late Registration Window
2026	Feb. 5-9	Nov. 3-30, 2025	Dec. 1-15, 2025
2027	Feb. 4-8	TBD	TBD
2028	Feb. 3-7	TBD	TBD

ITE dates are now
available through
2028 on our
website

Assessments Update

ITE Performance

By Training Level & Exam Year



June 2025 BASIC Exam Results

- Standard since June 2023: 67.5% (Scale Score = 184)
- Key validation eliminated four items from Form A and four items from Form B
- Reliability: 0.82 (Form A) & 0.81 (Form B)
- Pass rate breakdown:

First time-takers' pass rate: **89.8%**

Second time-takers' pass rate: **86.7%**

Third time-takers' pass rate: **73.7%**

Fifth time-takers' pass rate: **100.0%**

2,137

residents examined

89.5%

of residents
passed

Relation of Scores

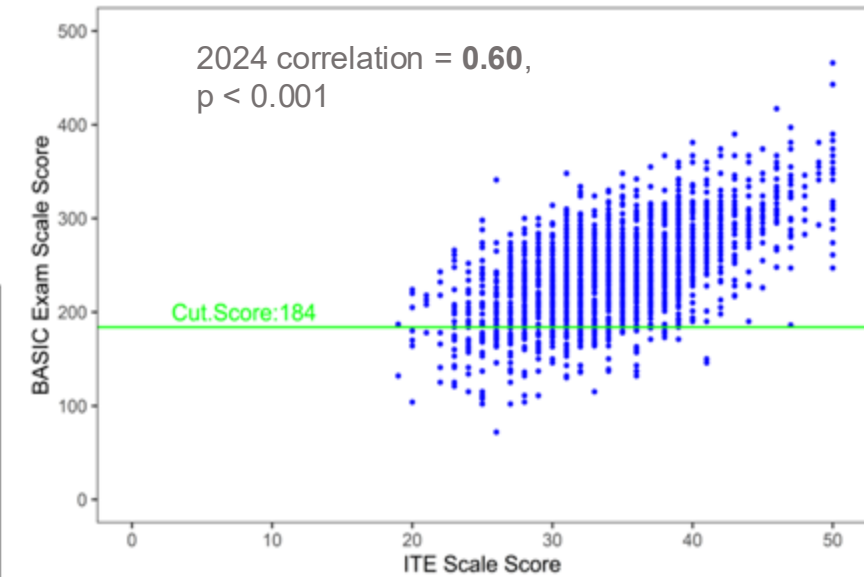
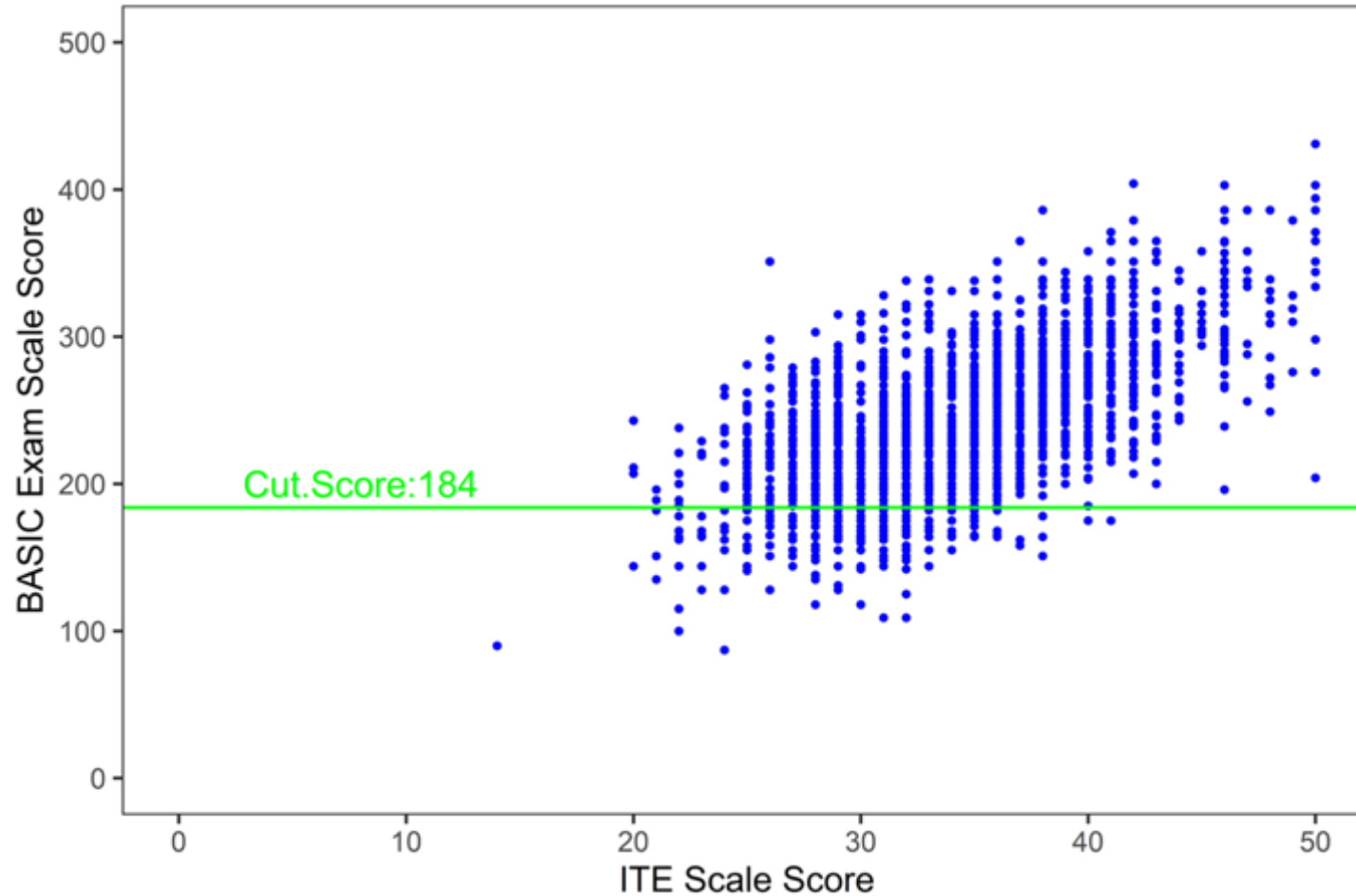
2025 ITE Through June 2025 BASIC Exam

2025 ITE Scaled Score	2025 ITE Percentile Rank in CA-1	N	June 2025 BASIC Scaled Score Mean (S.D.)	June 2025 BASIC Pass Rate
≤ 25	≤ 5	94	193 (40)	61%
26-30	7-25	417	213 (38)	77%
31-35	29-58	776	232 (38)	91%
36-40	66-86	552	258 (38)	98%
41-45	89-96	197	290 (39)	99%
≥ 46	≥ 97	76	322 (46)	100%

The correlation between the 2025 ITE scaled scores and 2025 June BASIC Exam scaled scores is 0.61, $p < 0.001$

Relation of Scores

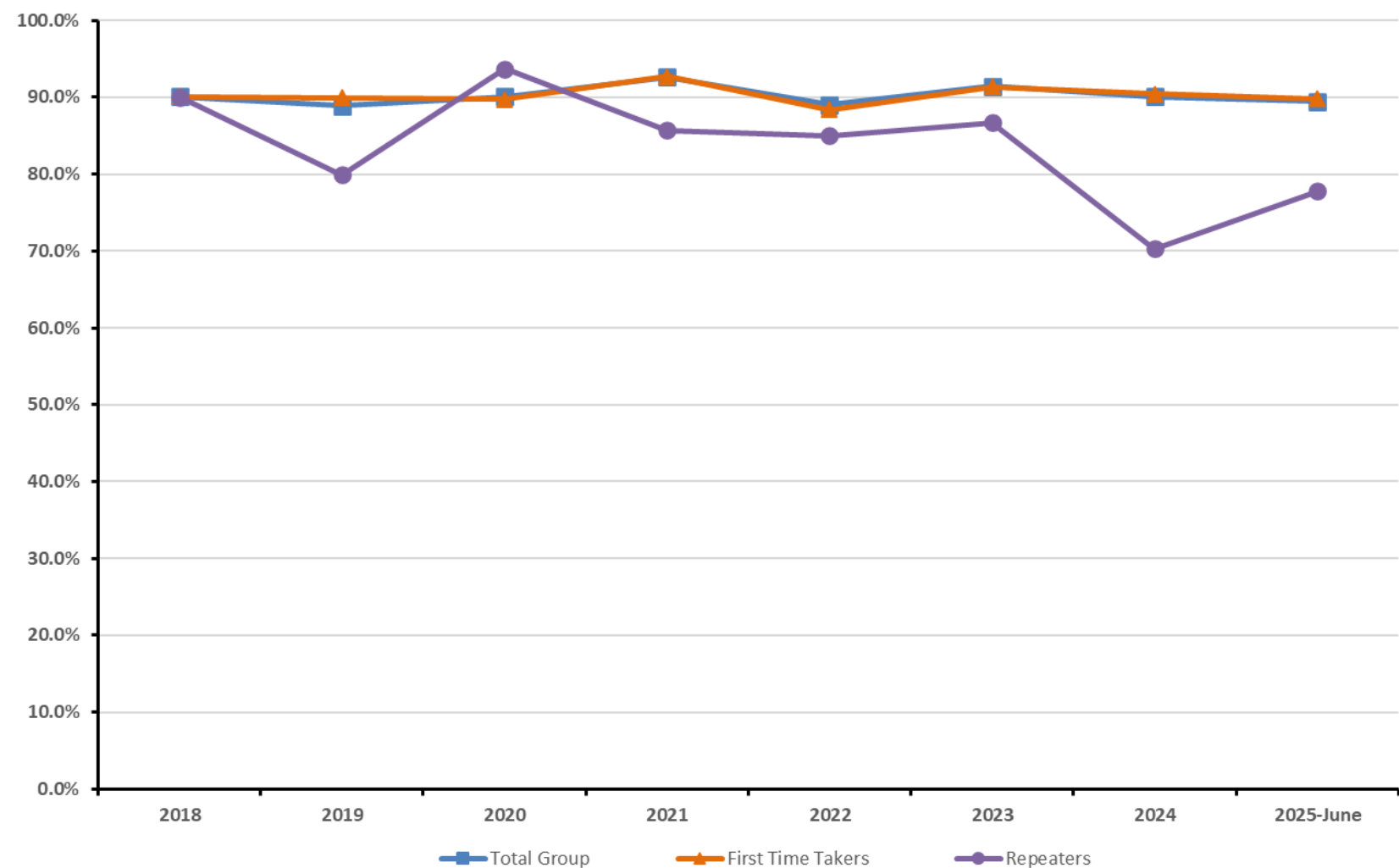
2025 ITE to 2025 June BASIC Exam



The correlation between the 2025 ITE scale scores and 2025 June BASIC Exam scale scores is 0.61, $p < 0.001$

BASIC Exam

Success Rates (through June 2025)



2025 July ADVANCED Exam Results

- Standard since July 2023: 66.0% (Scale Score = 178)
- Candidates were assigned to examine Friday or Saturday
- Key validation eliminated six items in Form A and three items in Form B
- Reliability: 0.74 (Form A) & 0.74 (Form B)

1,926

candidates
examined

87.1%

of candidates
passed

Relation of Scores

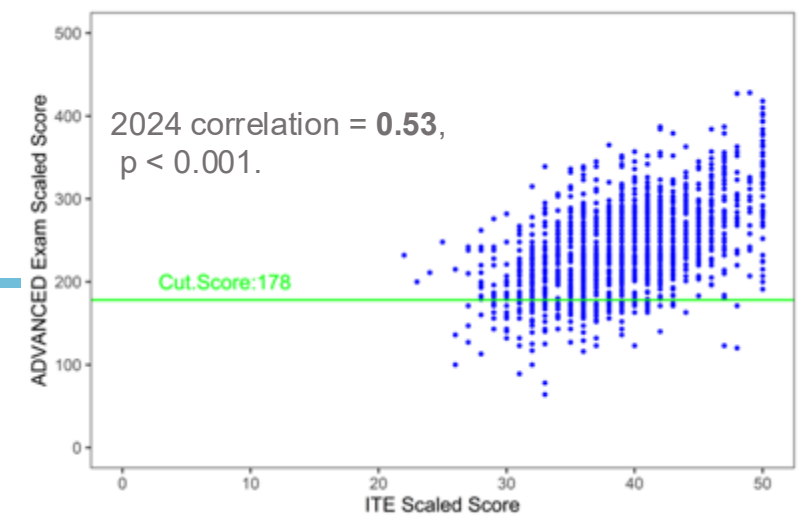
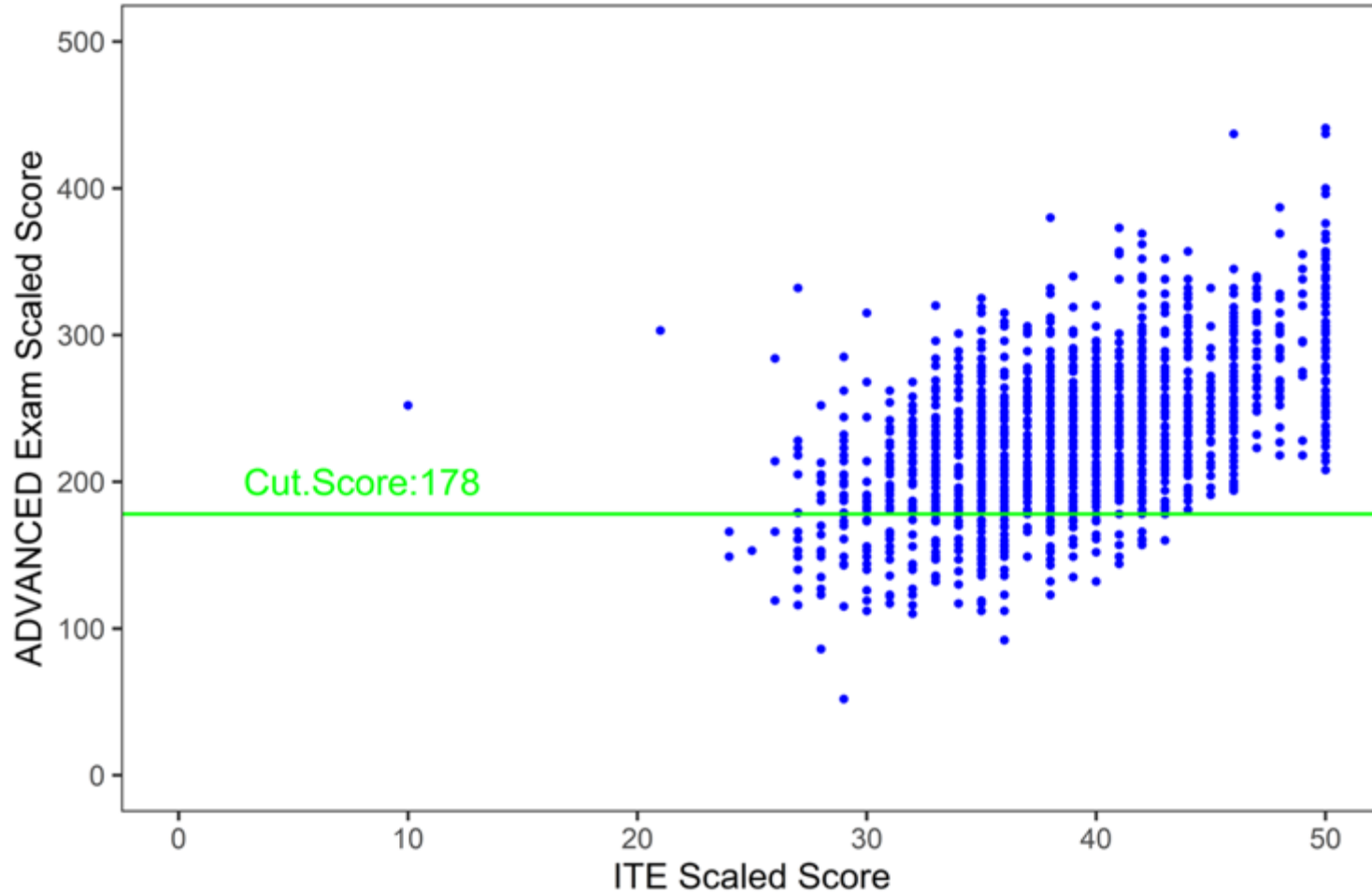
2025 ITE Through July 2025 ADVANCED Exam

2025 ITE Scaled Score	2025 ITE Percentile Rank in CA-3	N	July 2025 ADVANCED Scaled Score Mean (S.D.)	July 2025 ADVANCED Pass Rate
≤ 25	≤ 1	5	205(69)	40%
26-30	1-6	92	183(47)	58%
31-35	8-25	361	207(41)	80%
36-40	32-60	604	224(39)	91%
41-45	66-87	438	248(42)	98%
≥ 46	≥ 90	227	283(48)	100%

The correlation between 2025 ITE scaled scores and 2025 July ADVANCED Exam scaled Scores is 0.55, $p < 0.001$

Relation of Scores

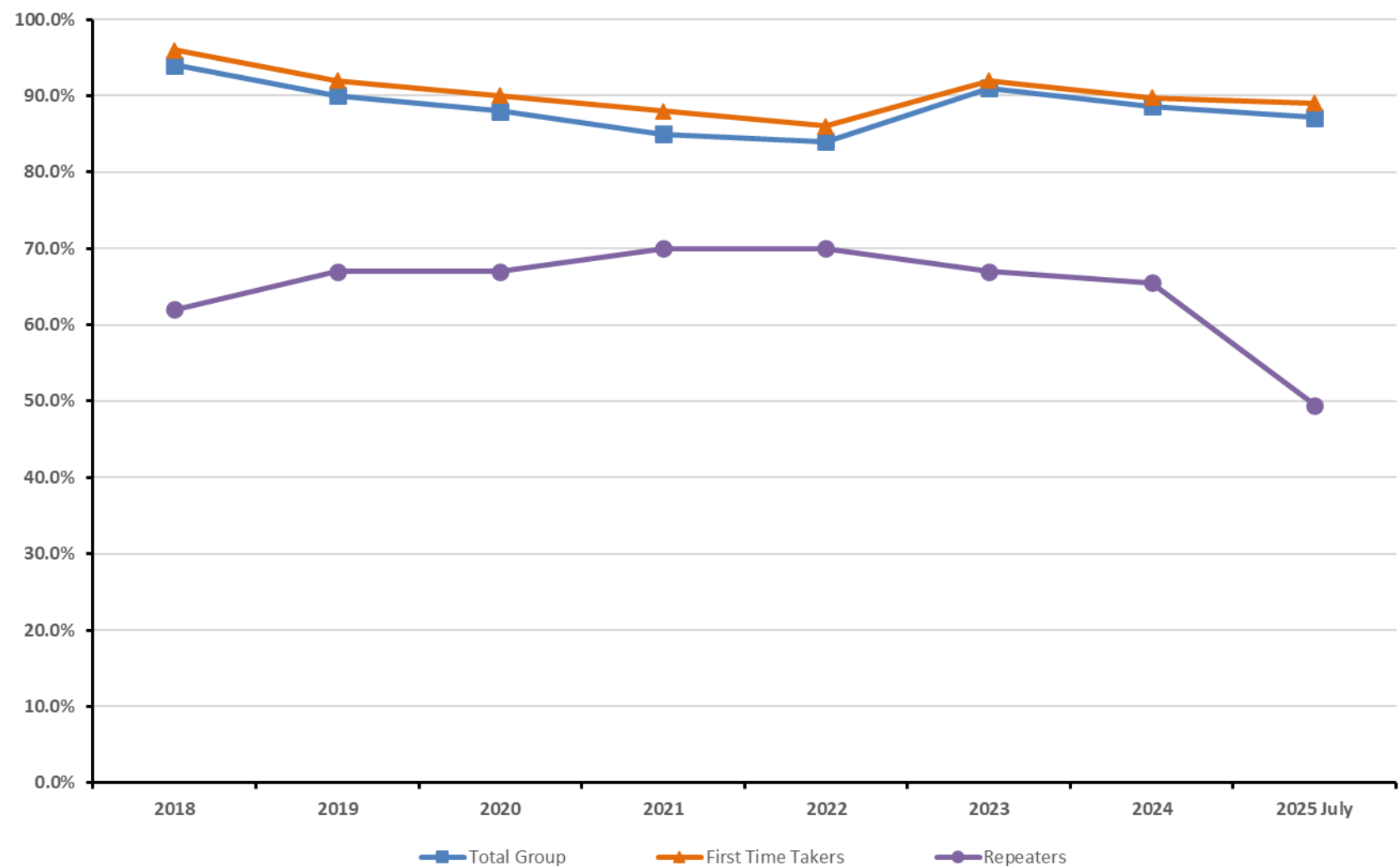
2025 ITE Through July 2025 ADVANCED Exam



The correlation between 2025 ITE scaled scores and 2025 July ADVANCED Exam scaled Scores is 0.55, $p < 0.001$

ADVANCED Exam

Success Rates (through July 2025)



APPLIED Exam



APPLIED EXAM: OSCE Updates

1

Application of Ultrasonography (Point-of-Care Ultrasound)

- Heart (2022)
- Lung (2024)
- Abdomen (2025)
- Airway-related structures (2027)

2

Interpretation of Echocardiogram & Ultrasonography

- Interpretation of Abdominal ultrasound images will include (2026):
 - Right Upper Quadrant
 - Left Upper Quadrant
 - Pelvis
 - Gastric
- Airway-related structures (2027)

3

Interpretation of Monitors

- Qualitative and quantitative neuromuscular blockade – value (2026)
- Fetal heart rate monitor – waveform and value (2026)

2027 Pilot: 8th OSCE Station

- **Airway Management**

- The successful candidate will demonstrate principles of airway management that may include any of the following items:
 - Airway examination including identification of normal anatomical structures and markers of anticipated difficult mask ventilation and/ or difficult intubation
 - Identification of landmarks for airway blocks (e.g. superior laryngeal n., transtracheal) and emergency surgical airway placement
 - Navigation of American Society of Anesthesiologists Difficult Airway Algorithm
 - Demonstrate choice and use of airway management techniques

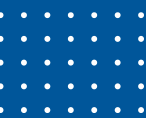
- **Team-based Skills**

- More than one standardized patient interacting with a candidate in a room

- **All APPLIED Candidates will participate in 8th station, either Airway or Team-based**

- Scoring for piloting purposes only
- Stations will be identified, and we will share pilot details with candidates ahead of time

Strategy 3: Evolve Certification Content to Emphasize a Durable (formerly “Holistic”) Skill Set



2025 APPLIED Exam Results (Weeks 1-6)



413 examiners delivered exam



2,728 candidates completed exam



2,280 achieved certification

2025 OSCE & SOE Results (Weeks 1-6)

- 2,480 candidates took both SOE and OSCE this year

	OSCE: Fail	OSCE: Pass	Total
SOE: Fail	158 (6.4%)	238 (9.6%)	396 (16.0%)
SOE: Pass	195 (7.9%)	1,889 (76.2%)	2,084 (84.0%)
Total	353 (14.2%)	2,127 (85.8%)	2,480 (100%)

2,553

candidates took
OSCE component

86.5%

of candidates passed
OSCE component

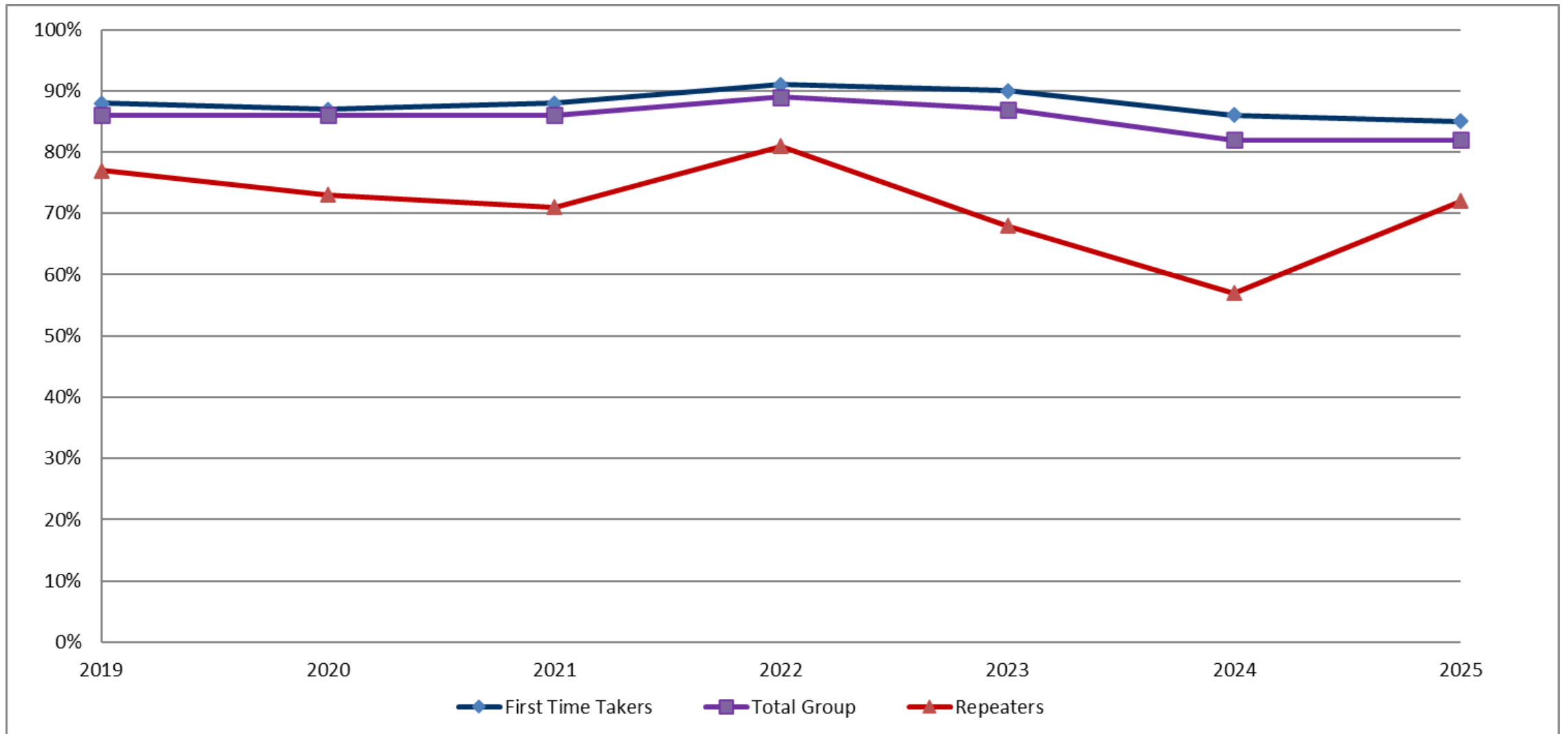
2,633

candidates took SOE
component

82.5%

of candidates passed
SOE component

Standardized Oral Exam Success Rates



Relation of Scores

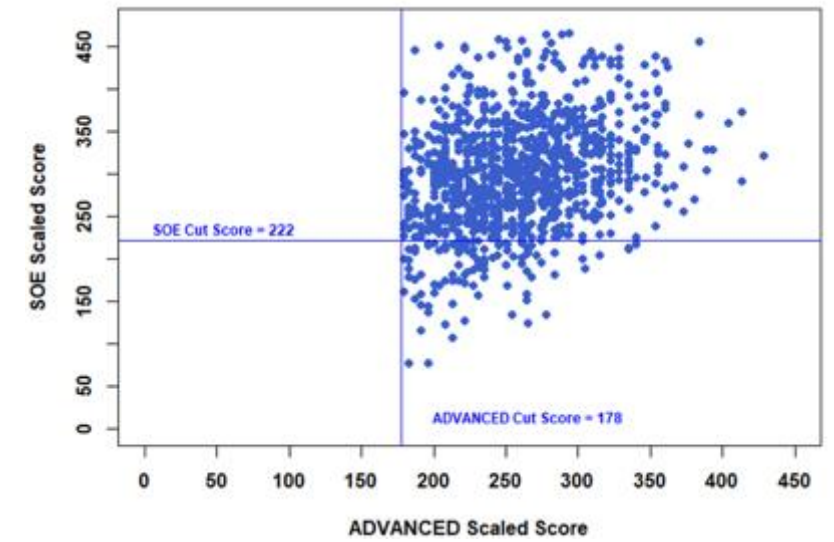
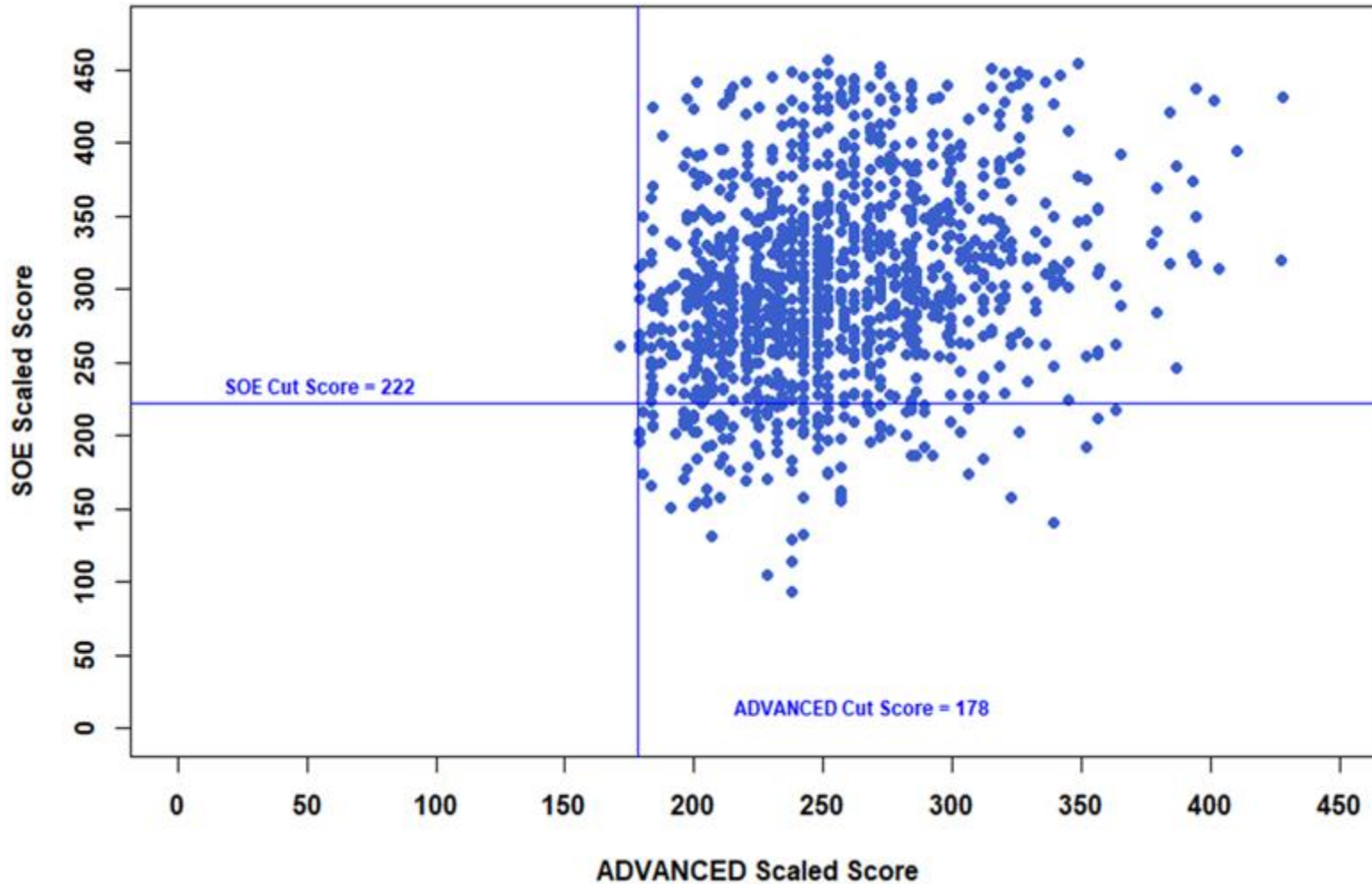
Spring 2025 SOE to First Attempt on July 2024 ADVANCED Exam

July 2024 ADVANCED Scaled Score	July 2024 ADVANCED Percentile Rank	N	Spring 2025 SOE Scaled Score Mean (S.D.)	Spring 2025 SOE Pass Rate
≤ 200	1-17	104	272(61)	78%
201-225	18-34	244	287(61)	87%
226-250	36-53	254	297(65)	89%
251-275	57-72	235	314(68)	91%
276-300	74-87	183	316(58)	93%
≥ 301	≥89	162	327(67)	94%

The correlation between the Spring 2025 SOE scaled scores and first attempt on the July 2024 ADVANCED Exam scaled scores is 0.25, $p < 0.001$

Relation of Scores

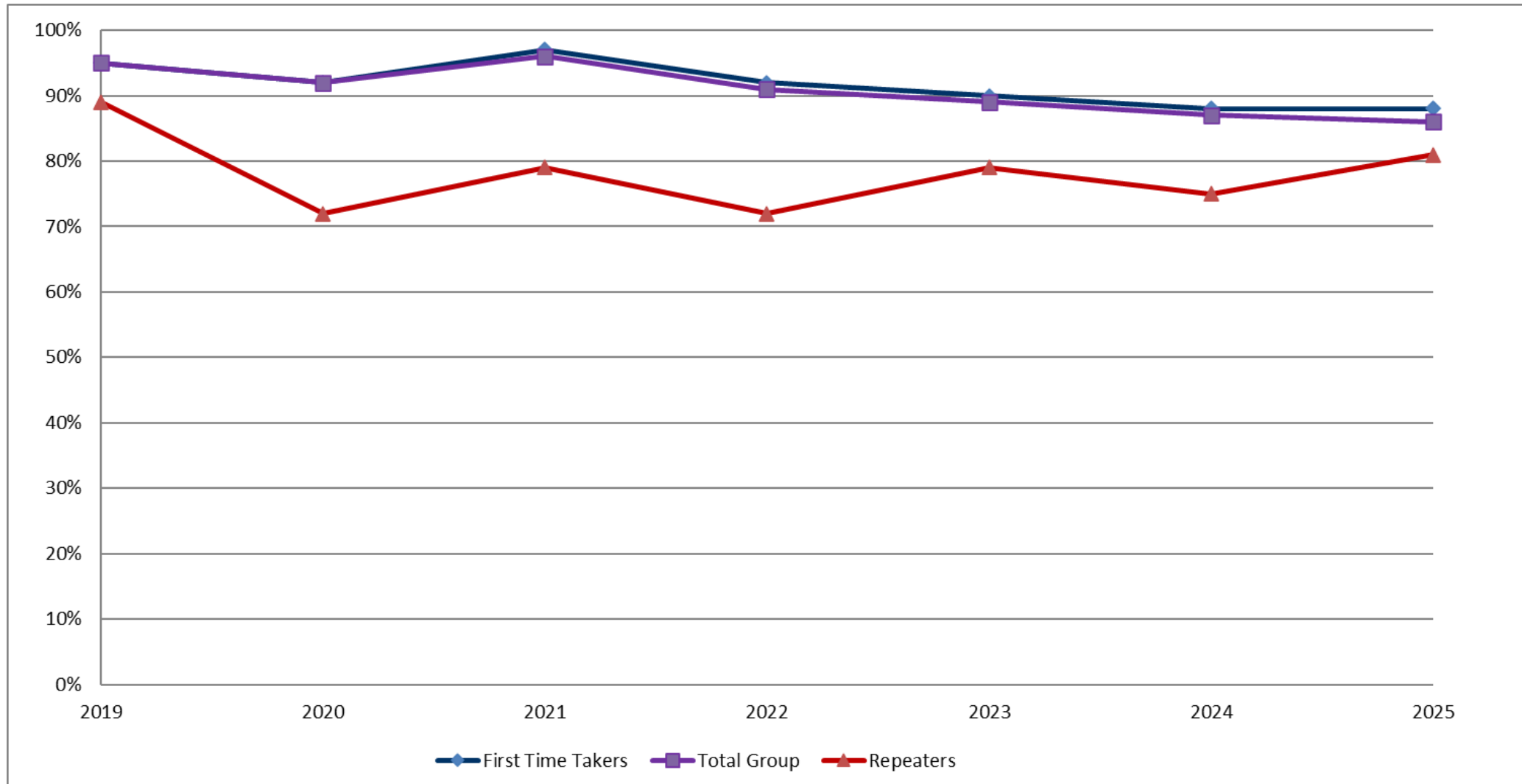
Spring 2025 SOE to First Attempt on July 2024
ADVANCED Exam



Spring 2024 SOE and first attempt
on July 2023 ADVANCED
correlation = 0.29, $p < 0.001$

The correlation
between the Spring
2025 SOE scaled
scores and first
attempt on the July
2024 ADVANCED
Exam scaled scores
is 0.25, $p < 0.001$

Objective Structured Clinical Exam Success Rates



Relation of Scores

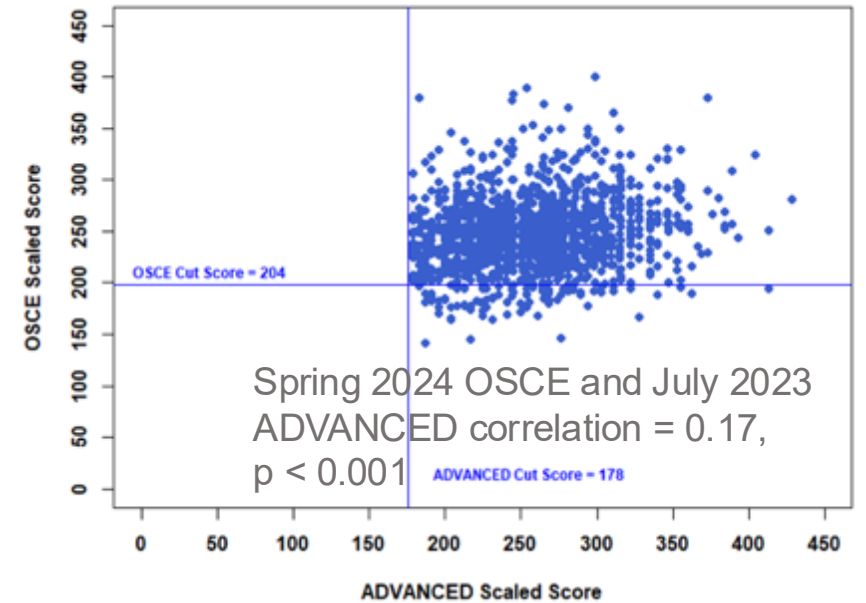
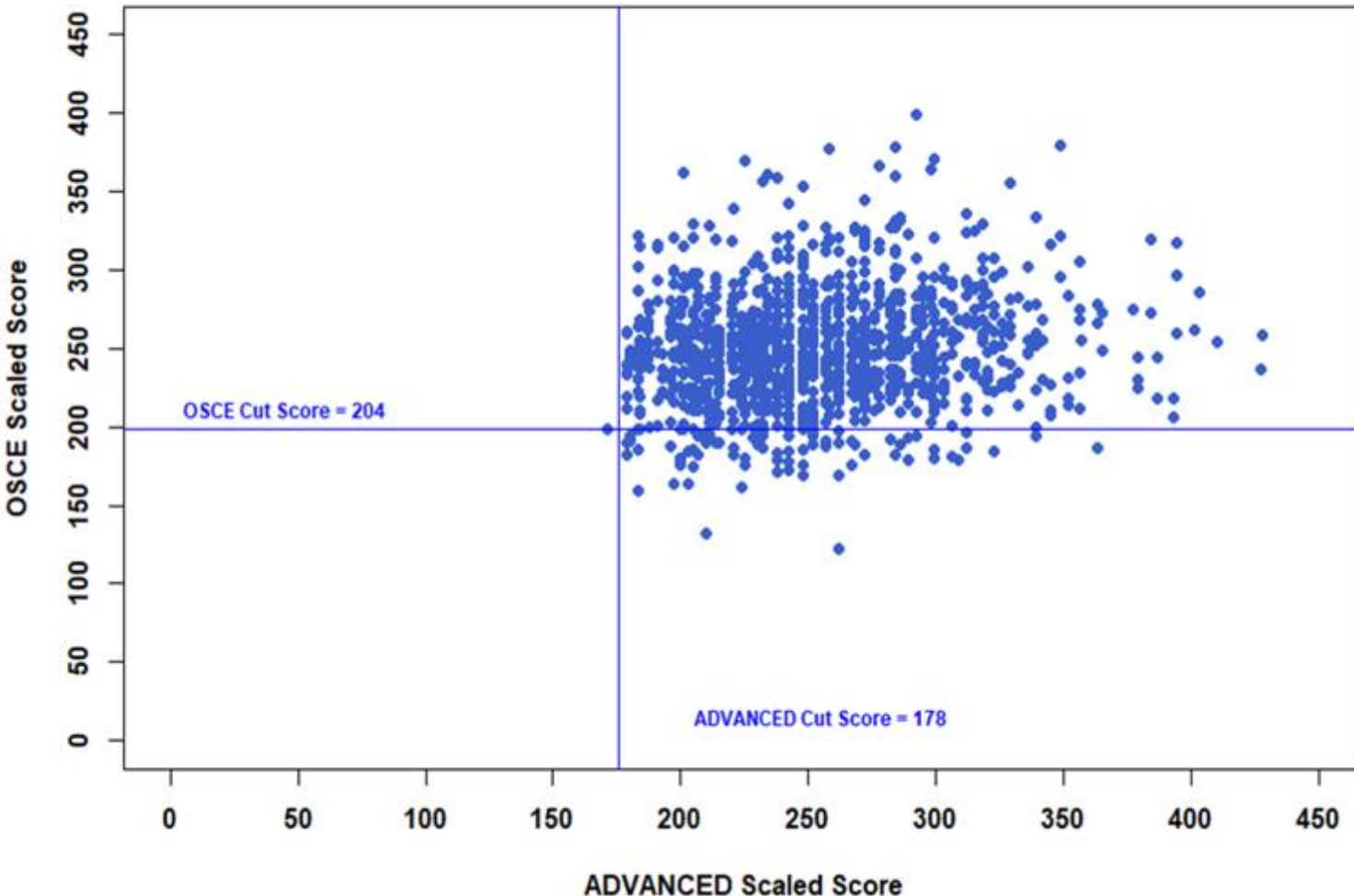
Spring 2025 OSCE to First Attempt on July 2024 ADVANCED Exam

July 2024 ADVANCED Scaled Score	July 2024 ADVANCED Percentile Rank	N	Spring 2025 OSCE Scaled Score Mean (S.D.)	Spring 2025 OSCE Pass Rate
≤ 200	1-17	104	242(36)	82%
201-225	18-34	244	242(35)	87%
226-250	36-53	255	248(36)	89%
251-275	57-72	235	250(35)	92%
276-300	74-87	183	257(38)	95%
≥ 301	≥89	162	257(36)	94%

The correlation between the spring 2025 OSCE scaled scores and first attempt on July 2024 ADVANCED Exam scaled scores is 0.17, $p < 0.001$

Relation of Scores

Spring 2025 OSCE to First Attempt on July 2024 ADVANCED Exam



The correlation between the spring 2025 OSCE scaled scores and first attempt on July 2024 ADVANCED Exam scaled scores is 0.17, $p < 0.001$

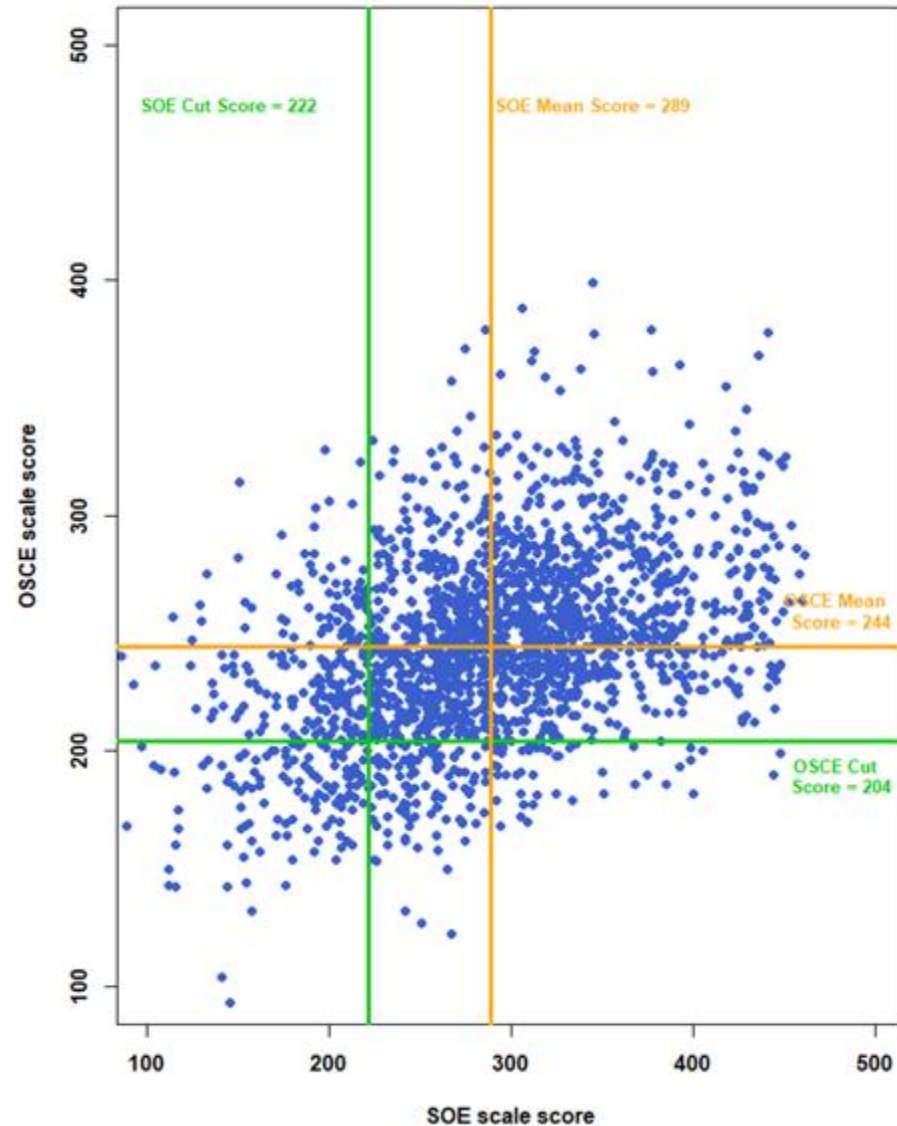
Relation of Scores

Spring 2025 SOE Through Spring 2025 OSCE Exam

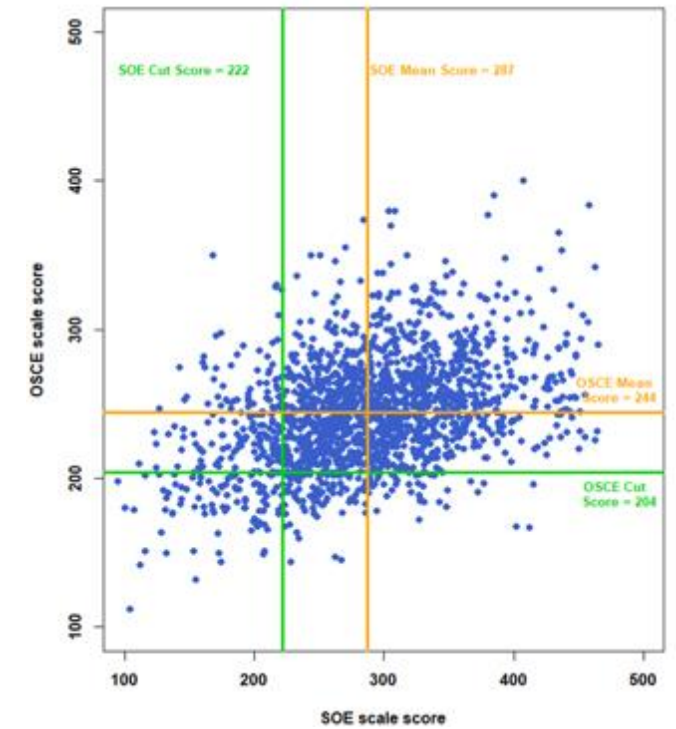
Spring 2025 SOE Scaled Score	N	Spring 2025 OSCE Scaled Score Mean (S.D.)	Spring 2025 OSCE Pass Rate
≤ 200	134	216(39)	60%
201-250	271	225(34)	74%
251-300	469	243(35)	88%
301-350	366	254(35)	94%
351-400	189	260(34)	96%
≥ 401	102	267(36)	97%

The correlation between the spring 2025 OSCE scaled scores and spring 2025 SOE scaled scores is 0.43, $p < 0.001$

Relation of Scores Between the OSCE and SOE Components



The correlation between the spring 2025 OSCE scaled scores and spring 2025 SOE scaled scores is 0.43, $p < 0.001$



Spring 2024 OSCE and spring 2024 SOE correlation = 0.41, $p < 0.001$

We Are Here To Help



coms@theaba.org



www.theaba.org



(866) 999-7501



4200 Six Forks Road, Suite 1100
Raleigh, North Carolina 27609



Questions?

